

RESIDENCIAL VELAPI II

San Javier

- 78 HOUSES
- RESIDENTIAL BUILDINGS
- GARAGES
- SWIMMING POOL
- GREEN ZONES
- PLAYGROUND ZONES

SAN JAVIER
EURO-RODA



www.gamainmobiliaria.com

THE IMAGES REFER TO APPROXIMATE SOLUTIONS AND ARE
NOT BINDING WITH THE FINAL PROJECT



● Roda Golf

Apartment Complex ●

Mar Menor ●

Apartment complex
RESIDENCIAL VELAPI





RESIDENCIAL VELAPI II *San Javier*

THE IMAGES REFER TO APPROXIMATE SOLUTIONS AND
ARE NOT BINDING WITH THE FINAL PROJECT

SAN JAVIER
EURO-RODA (MURCIA)



BLOCK 1
40 HOUSES

BLOCK 3
28 HOUSES

BLOCK 2
10 HOUSES



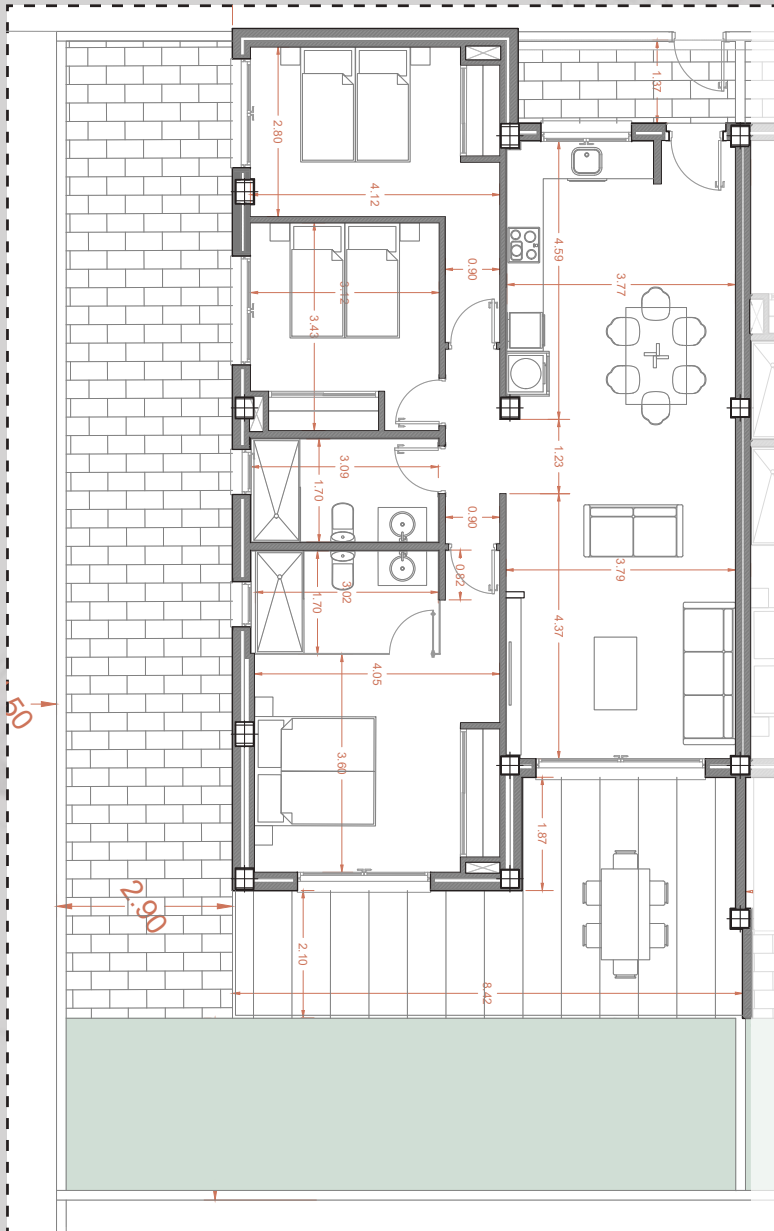


SURROUNDING AREA

- BEAUTIFUL SANDY BEACHES
- GOLF CLUB
- LEISURE ZONES
- SUNNY WEATHER
- TRANQUILITY AND REST

A - HOUSE

BLOCKS 1, 2, 3



BLOCK 1 - TYPE A HOUSES

GROUND FLOOR HOUSES 1-8
1ST FLOOR HOUSES 9-16
2ND FLOOR HOUSES 17-24
3RD FLOOR HOUSES 25-32
4TH FLOOR HOUSES 33-40

BLOCK 2 - TYPE A HOUSES

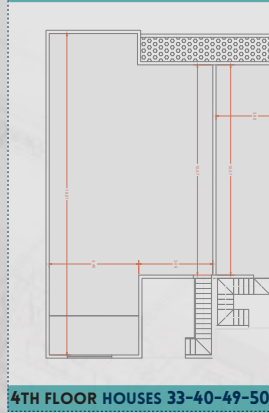
GROUND FLOOR HOUSES 41-42
1ST FLOOR HOUSES 43-44
2ND FLOOR HOUSES 45-46
3RD FLOOR HOUSES 47-48
4TH FLOOR HOUSES 49-50

BLOCK 3 - TYPE A HOUSES

GROUND FLOOR HOUSES 51-56
1ST FLOOR HOUSES 57-62
2ND FLOOR HOUSES 63-68
3RD FLOOR HOUSES 69-74

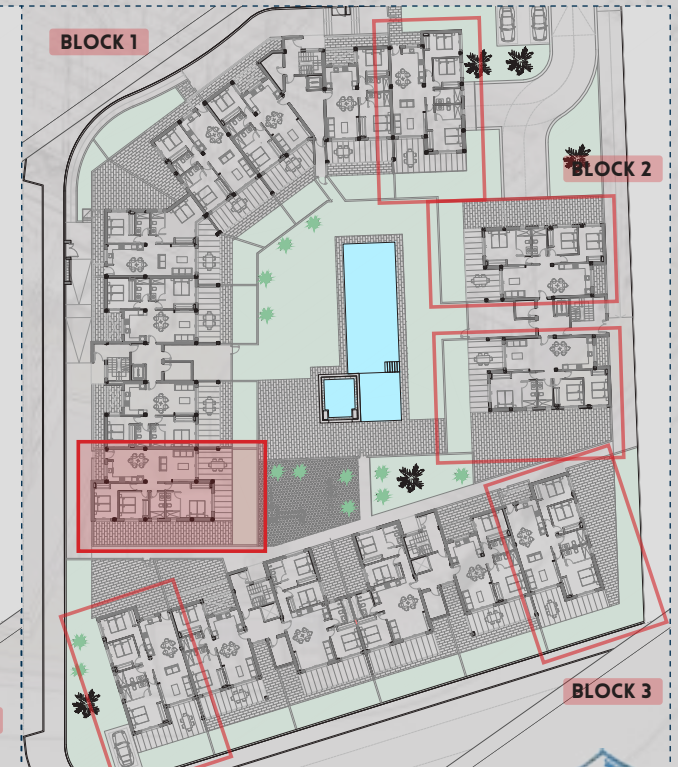
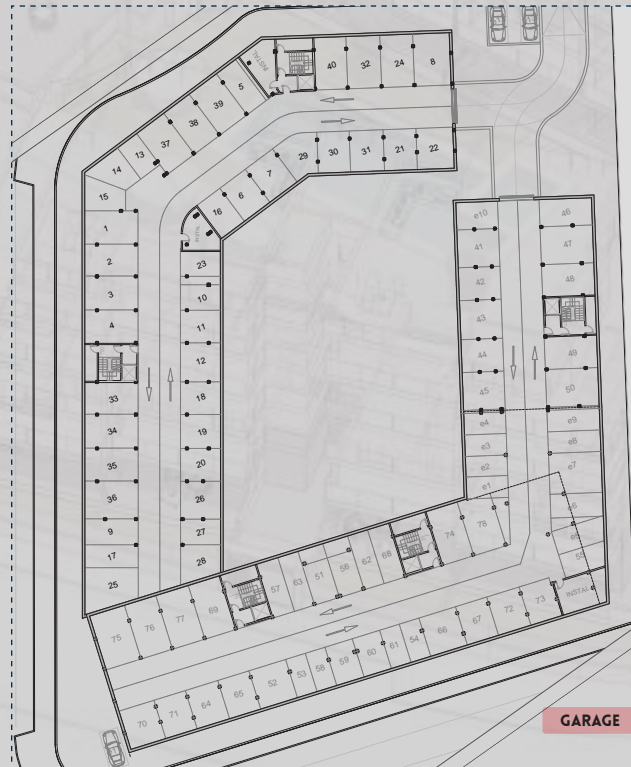


SOLARIUM 109 M2



BUILT SURFACE 129 M2

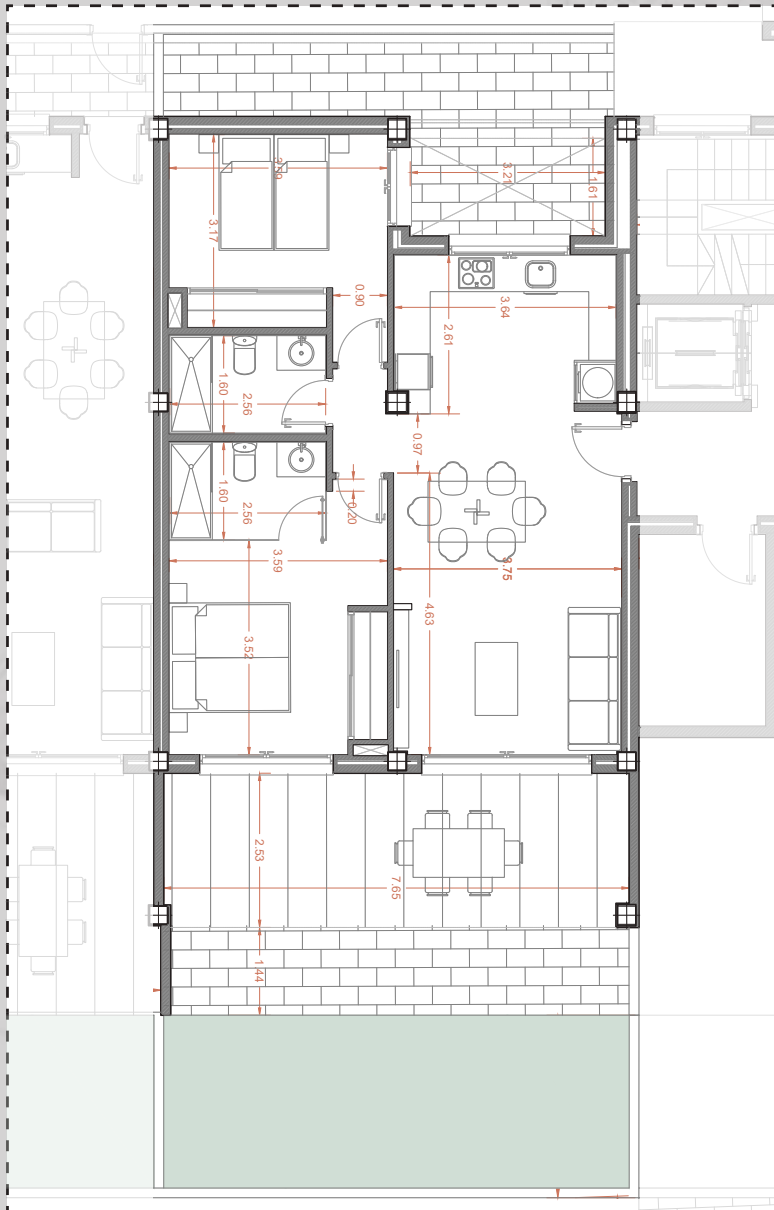
LIVING ROOM KITCHEN	38,40 M2
BEDROOM 1	16,25 M2
BEDROOM 2	13,20 M2
BEDROOM 3	10,50 M2
BATHROOM 1	5,15 M2
BATHROOM 2	5,25 M2
CORRIDOR	3,00 M2
COVERED TERRACE 50%%	12,00 M2
TOTAL USABLE SURFACE	103,75 M2
EXT.TERRACE+GARDEN	VARIABLE (GROUND FLOOR)





B - HOUSE

BLOCKS 1, 3

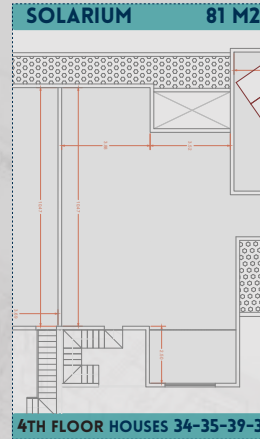


BLOCK 1 - TYPE B HOUSES

- GROUND FLOOR HOUSES 2-3-6-7
- 1ST FLOOR HOUSES 10-11-14-15
- 2ND FLOOR HOUSES 18-19-22-23
- 3RD FLOOR HOUSES 26-27-30-31
- 4TH FLOOR HOUSES 34-35-38-39

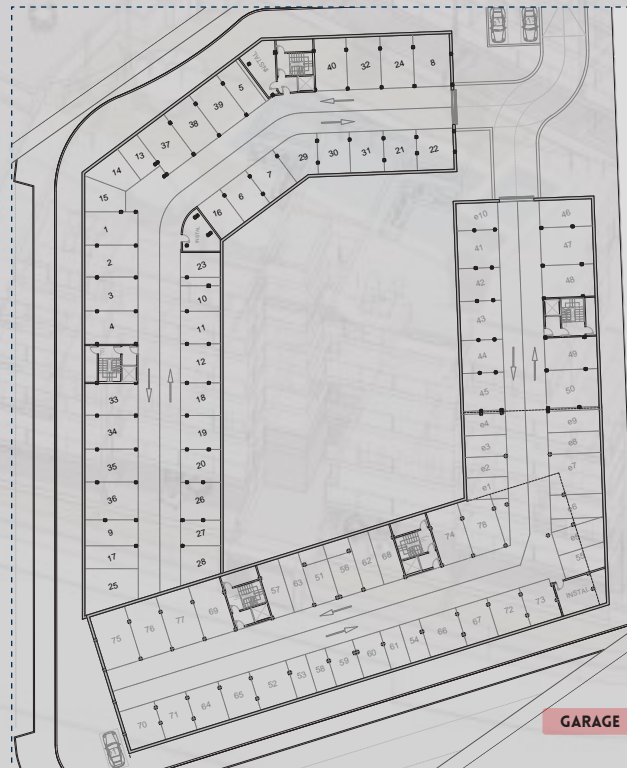
BLOCK 3 - TYPE B HOUSES

- GROUND FLOOR HOUSES 52-55
- 1ST FLOOR HOUSES 58-61
- 2ND FLOOR HOUSES 64-67
- 3RD FLOOR HOUSES 70-73



BUILT SURFACE	95,00 M2
LIVING ROOM KITCHEN	30,40 M2
BEDROOM 1	13,50 M2
BEDROOM 2	11,60 M2
BATHROOM 1	4,10 M2
BATHROOM 2	4,10 M2
CORRIDOR	1,65 M2
COVERED TERRACE 50%%	9,50 M2*
TOTAL USABLE SURFACE	74,85 M2
EXT.TERRACE+GARDEN	VARIABLE (GROUND FLOOR)

*VARIABLE SURFACE (B1-B2-B3)





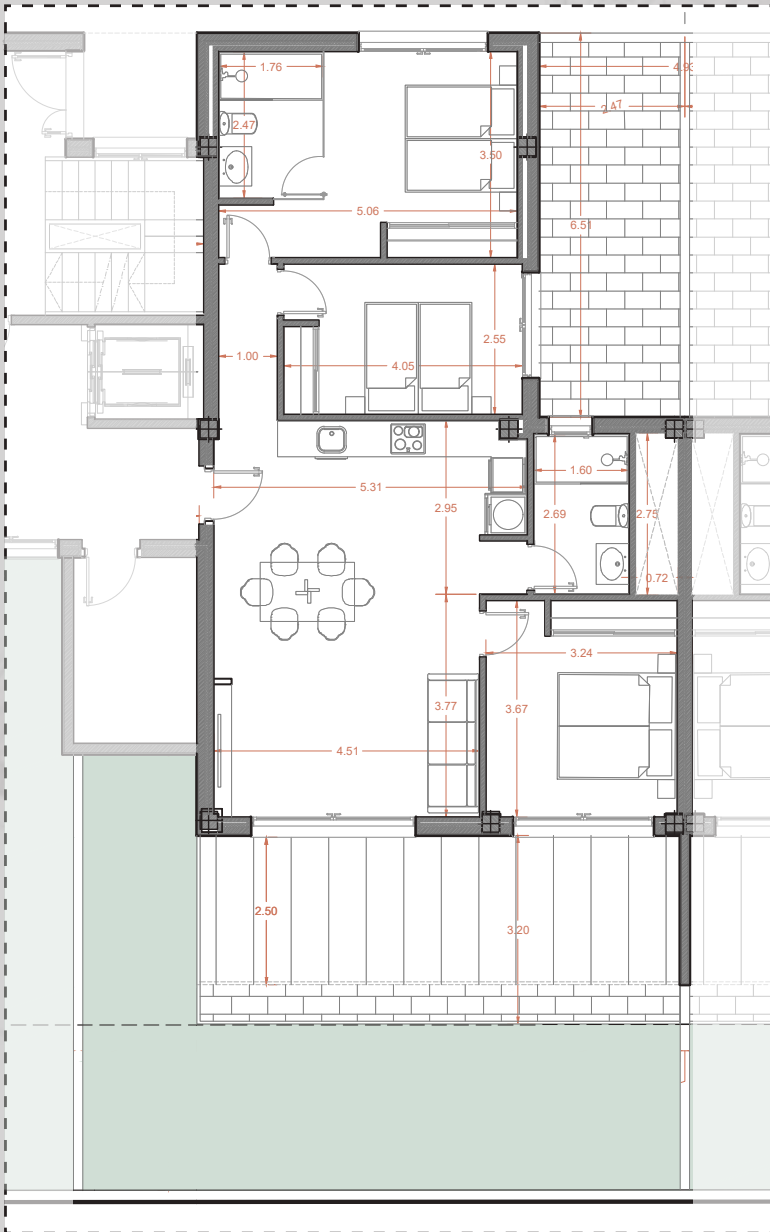
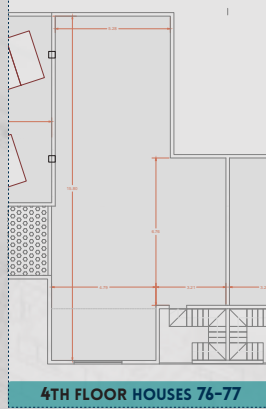
E - HOUSE

BLOCK 3

BLOCK 3 - TYPE E HOUSES

GROUND FLOOR HOUSES 53-54
 1ST FLOOR HOUSES 59-60
 2ND FLOOR HOUSES 65-66
 3RD FLOOR HOUSES 71-72
 4TH FLOOR HOUSES 76-77

SOLARIUM 100 M2



BUILT SURFACE 111,40 M2

LIVING ROOM KITCHEN 31,50 M2

BEDROOM 1 13,00 M2

BEDROOM 2 11,70 M2

BEDROOM 3 10,30 M2

BATHROOM 1 4,30 M2

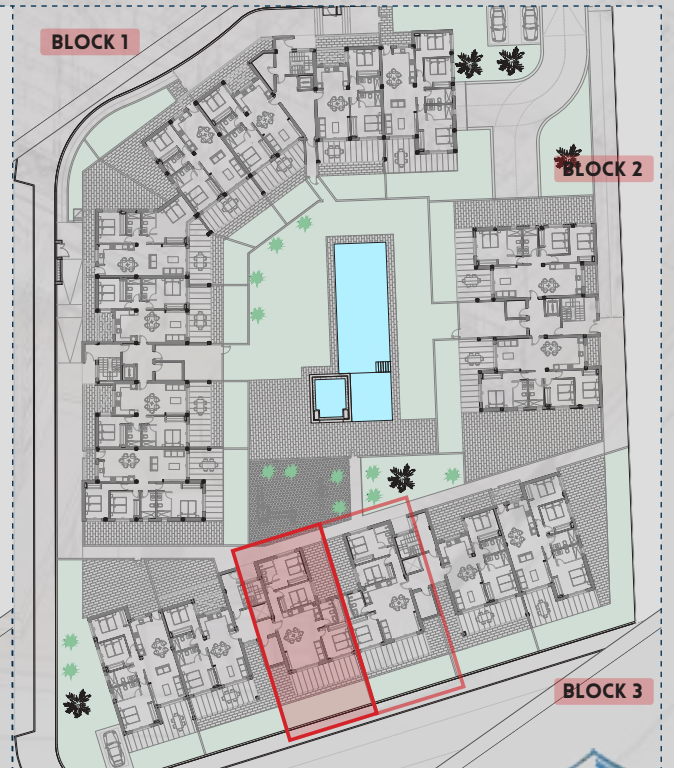
BATHROOM 2 4,30 M2

CORRIDOR 2,65 M2

COVERED TERRACE 50%% 10,20 M2

TOTAL USABLE SURFACE 87,95 M2

EXT.TERRACE+GARDEN VARIABLE (GROUND FLOOR)



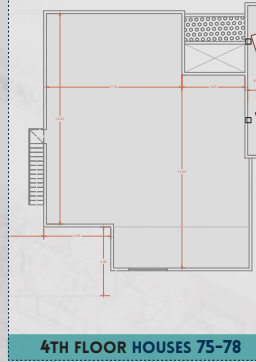


F - HOUSE

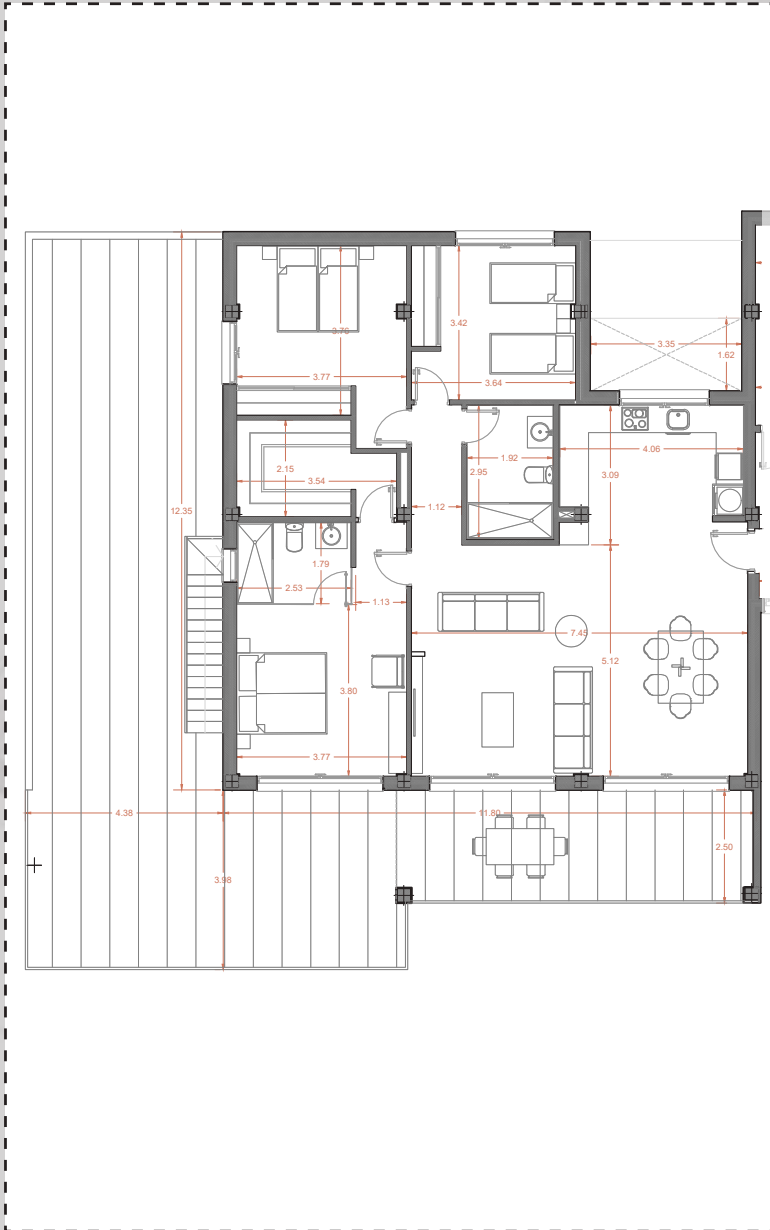
BLOCK 3

BLOCK 3 - TYPE F HOUSES
4TH FLOOR HOUSES 75-78

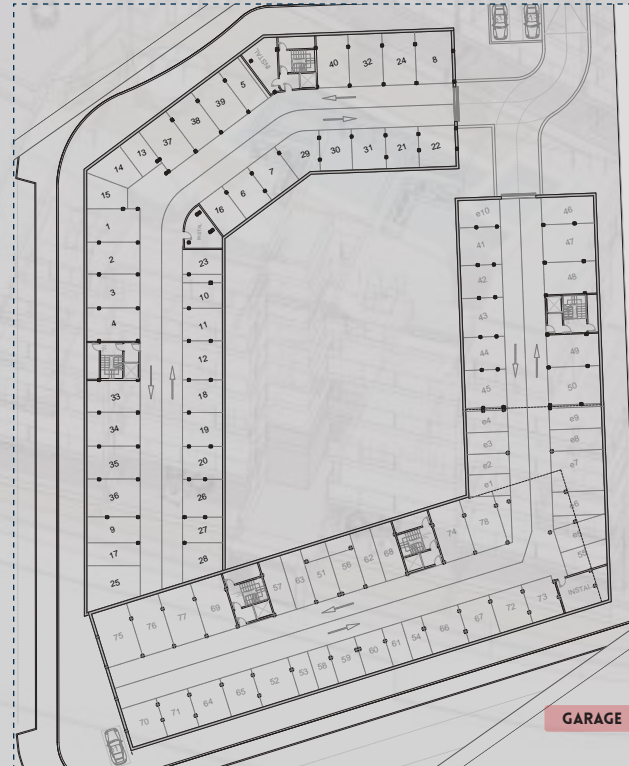
SOLARIUM 144 M²



4TH FLOOR HOUSES 75-78



BUILT SURFACE	150,80 M²
LIVING ROOM KITCHEN	50,50 M ²
BEDROOM 1	16,40 M ²
BEDROOM 2	14,85 M ²
BEDROOM 3	12,20 M ²
BATHROOM 1	4,50 M ²
BATHROOM 2	5,60 M ²
DRESSING ROOM	6,85 M ²
CORRIDOR	3,40 M ²
COVERED TERRACE 50%%	10,00 M ²
TOTAL USABLE SURFACE	124,30 M²
EXT.TERRACE+GARDEN	VARIABLE (GROUND FLOOR)



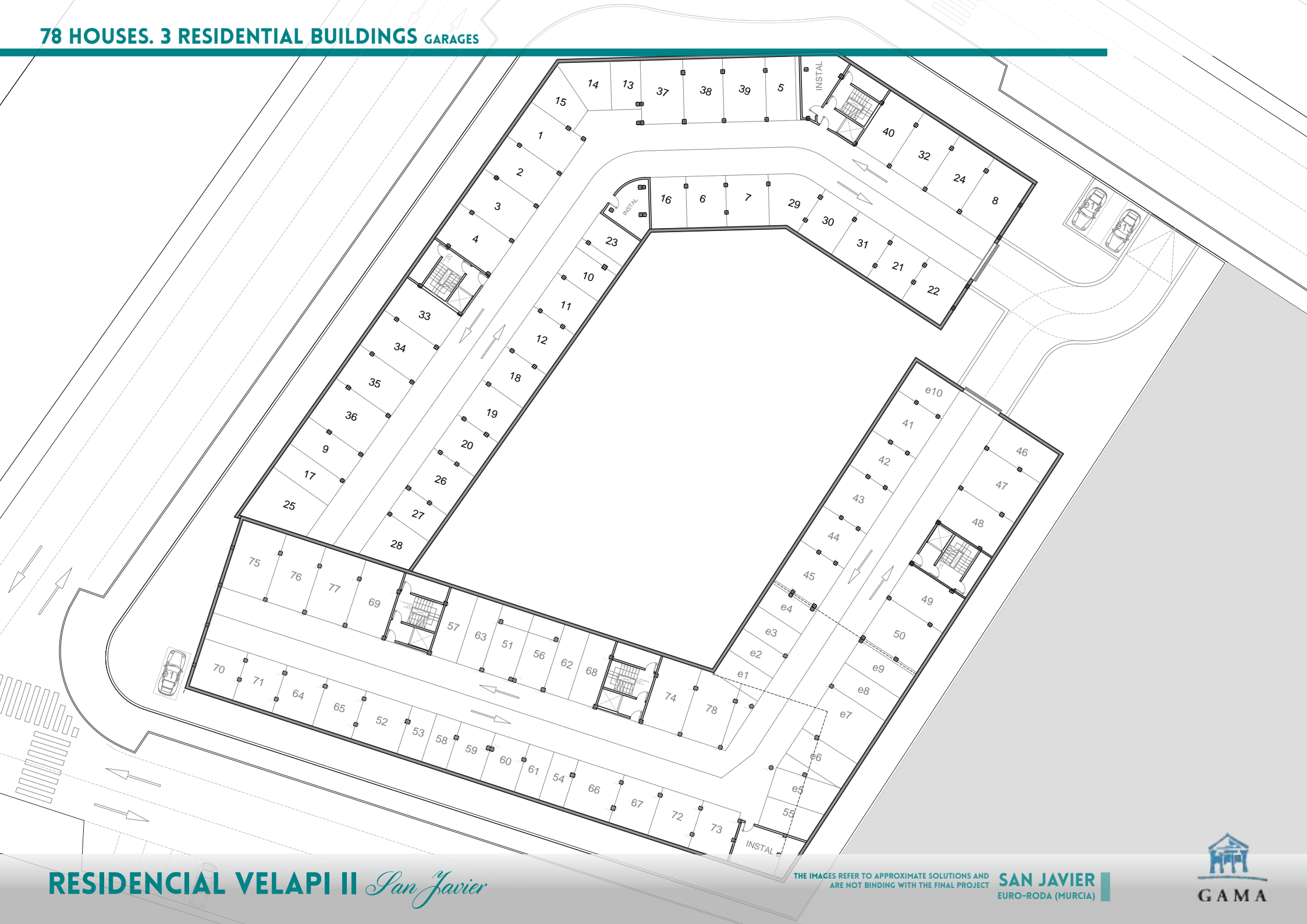
COMMUNITY AREAS

- SWIMMING POOL
- PLAYGROUND ZONE
- GREEN ZONES
- UNDERGROUND PARKING

FEATURES

- SOUTH-EAST-WEST ORIENTATIONS
- LIFT
- GROUND FLOOR TERRACES
- PRIVATE SOLARIUM 4TH FLOOR





RESIDENCIAL VELAPI II

San Javier



Private complex of 78 modern apartments, with 3 residential buildings, large green area, swimming pool and playground zones.

Located in a beautiful and relaxing area of San Javier. Apartments with two/three bedrooms and two bathrooms, living room and open kitchen, all with underground parking space included.

Ground floor with large terrace and garden, 4th floor with private solarium.

Currently, Euro-Roda is a place where you can enjoy the sun, the beach and its golf courses. Just a few minutes away from Mar Menor, and very close to some leisure areas, a privileged area to live.



info@gamainmobiliaria.com



www.gamainmobiliaria.com



+34 965 709 386





GAMA GRUPO DE EMPRESAS
AVDA. HABANERAS, 56
03182 TORREVIEJA (ALICANTE)
TEL: +34 965 709 386

Gama Group is a development company with over thirty years of experience gained over three generations of builders, committed to the service of residential tourism on the Costa Blanca in Alicante. We specialize in the construction and sale of large residential developments.


We build high quality homes designed for very demanding clients, along with excellent personal service. In addition to the sale of residential homes, we provide a full service that includes legal and financial representation. With these services we provide complete satisfaction to our clients when

purchasing their house on the beach in the Costa Blanca.

Gama Group incorporates all kinds of features both inside and outside of the property, and we locate all our developments in strategic locations, giving accessibility to services and amenities (health, leisure, transport, etc.), and taking into account the peaceful surroundings on the Costa Blanca.

 info@gamainmobiliaria.com

 www.gamainmobiliaria.com

 +34 965 709 386

.....
RESIDENCIAL VELAPI II *San Javier*

SAN JAVIER
EURO-RODA (MURCIA)