

loreeze

GUADALMINA GOLF ● MARBELLA

WELCOME
HOME



03

UBICACIÓN
LOCATION

12

PROYECTO
PROJECT

22

GALERÍA
GALLERY

A photograph of a sunset over the ocean. The sun is a bright, glowing orb on the right side of the frame, partially obscured by a white rectangular box. The sky transitions from a deep orange near the horizon to a lighter yellow at the top. The water in the foreground is dark with gentle ripples, reflecting the light from the sun. The text 'COSTA DEL SOL' is written in a clean, white, sans-serif font inside the white box.

COSTA
DEL SOL

Una zona privilegiada

Breeze se sitúa en una de las zonas más privilegiadas de la Costa del Sol, con más de 70 campos de golf, 300 días de sol al año, una temperatura media anual de 20 °C y muy próximo a espacios de cultura, deporte, playas, ocio, shopping y gastronomía.

A privileged area

Breeze is located in one of the most privileged areas on the Costa del Sol, with more than 70 golf courses, 300 days of sunshine a year, an average annual temperature of 20 degrees and very close to spaces of culture, sports, beaches, leisure, shopping, and gastronomy.



MARBELLA

DIST
REST
Ca

LA TIEN

mar
bella
is
shin
ing

i s c u m i n g

Marbellí

adj. natural de Marbella

adj. of/from Marbella

Como ciudad agrícola languideció Marbella, acogiendo a los que fueron conocidos en principio como veraneantes, que no turistas, que es un término relativamente moderno.

Hasta los años 50 en que, encabezados por Ricardo Soriano, seguidos por los Hohenlohe, Goizueta, Banús, Guerrero, Coca, surgió la Marbella actual: símbolo y señal del turismo de calidad, que viene a cambiar definitivamente la fisionomía de Marbella, San Pedro de Alcántara y todo el término municipal, así como, la actividad económica y la forma de vida de sus habitantes.

As an agricultural town, Marbella languished, welcoming those who were first, known as holymakers, not tourists, which is a relatively modern term.

It wasn't until the 50s when, led by Ricardo Soriano and later the Hohenlohes, Goizuetas, Banús, Guerreros, Cocas, that the current Marbella flourished as a symbol and indicator of quality tourism. All of his came to definitively change the physiognomy of Marbella, San Pedro de Alcántara and the entire district as well as the economic activity and lifestyle of its inhabitants.

An aerial photograph of a lush green golf course. A paved path winds through the left side of the frame. The course features rolling green hills, several sand traps, and a water hazard on the right side. The lighting is bright, creating soft shadows across the grass.

PARAISO
DEL GOLF

GOLF
PARADISE

Viva al lado de los mejores campos de golf

Breeze se encuentra rodeado de los mejores campos de golf del mundo, a los cuales podrá acceder en menos de 10 minutos.

Real Club de Golf de Guadalmina
Atalaya Golf and Country Club
El Paraíso Golf Club
Los Arqueros Golf Club
El Higueral Golf Club
La Zagaleta Golf Club

entre muchos más...

Live beside the best golf courses

Breeze is surrounded by the best golf courses in the world. The best golf courses can be reached in less than 10 minutes.

Real Club de Golf de Guadalmina
Atalaya Golf and Country Club
El Paraíso Golf Club
Los Arqueros Golf Club
El Higueral Golf Club
La Zagaleta Golf Club

and many more...

A wide-angle photograph of a sunset over a beach. The sun is low on the horizon, partially obscured by a layer of clouds, creating a golden glow. The sky transitions from a deep blue at the top to a lighter, hazy blue near the horizon. The ocean is dark, with white foam from waves washing onto the sandy beach in the foreground. The word 'GUADALMINA' is written in a white, sans-serif font, centered within a white rectangular box that frames the sunset scene.

GUADALMINA

Guadalmina, *¡qué tierra! ¡qué mar!*

El primer vistazo a la antigua Colonia de San Pedro Alcántara lo echó Norberto Goizueta cuando, en compañía de su familia, fondeó su yate en un día lluvioso frente a Guadalmina en el año 1934. Norberto Goizueta era Ingeniero Agrónomo, se dedicaba a situar fincas en labores de explotación. Cuando vio Guadalmina, todo fueron halagos “qué tierra, qué mar” exclamó. Enamorado de inmediato de ese lugar afirmó convencido “Esto lo compro yo”.

Al desembarcar, preguntó a un capataz que paseaba por allí a caballo, sobre la propiedad de aquella vasta extensión de terreno, a lo que el capataz respondió que pertenecía a la Sociedad General Azucarera y que se estaba procediendo a su parcelación para una futura venta. Habló entonces con el administrador de la Azucarera, que vivía en la plaza de la Iglesia, el Sr. Robledano y a quien San Pedro rindió tributo dedicándole el conocido “Pasaje Robledano”.

Hoy en día, Guadalmina se ha convertido en La Moraleja de la Costa del Sol.

Guadalmina, *what a land! what a sea!*

The first sight to the Old Town of San Pedro de Alcántara, was made by Norberto Goizueta when in 1934, accompanied by his family, he anchored his yacht in a rainy day in front of Guadalmina. Norberto Goizueta, was an agricultural engineer who was dedicated to transform lands to be exploited.

When he saw Guadalmina, every word he said was a compliment, “what a land, what a sea! He exclaimed. He was so in love of that place that he affirmed “ I will buy this”.

When he disembark, he asked to a foreman that was riding a horse around, about who was the owner of that land, so the foreman answer that the General Sugar Society were the owners and that they were making plots of land for a future sale. He then asked with the General Sugar Society administrator who lived in the church square. Mr. Robledano to whom San Pedro made tribute dedicating him “Pasaje Robledano”

Nowadays, Guadalmina has become In the Moraleja of Costa del Sol.



PROYECTO

PROJECT

Espectaculares apartamentos y áticos en una localización perfecta

34 apartamentos y áticos, de 2,3 y 4 dormitorios, en una ubicación perfecta, para que disfrute del estilo de vida mediterráneo.

Breeze es un proyecto residencial del lujo ubicado en la zona Alta de Guadalmina, en Marbella (Málaga) uno de los rincones más espectaculares de la Costa del Sol, muy cerca de San Pedro de Alcántara y Puerto Banús.

Spectacular apartments and penthouses in a perfect location

34 amazing apartments and penthouses, of 2,3 and 4 bedrooms, in a perfect location, for you to enjoy the Mediterranean lifestyle.

Breeze is a luxury residential Project in Guadalmina Alta, Marbella (Malaga) one of the most spectacular spots in the Costa del Sol, near San Pedro de Alcántara and Puerto Banús.

Luz, confort y elegancia en cada espacio

Cada vivienda está dotada del confort y la elegancia que proporcionan los amplios ventanales y las vistas al campo de golf de Guadalmina. Este diseño arquitectónico ofrece un espacio abierto y luminoso, con muchas posibilidades en la decoración, para disfrutar del descanso de una de las zonas más privilegiadas del mundo.

Las cocinas han sido magníficamente equipadas con electrodomésticos de primer nivel. Además, te ofrecemos la posibilidad de personalizar la cocina, según tu gusto y estilo, con una amplia variedad de posibilidades y acabados Premium.

Light, comfort and elegance in every space

The living room is designed to ensure wellbeing and offers ease and elegance with large windows and views of the Guadalmina golf course.. This architectural feature offers a very spacious and luminous space with numerous possibilities for decoration, this guarantees you a place of repose and leisure where you can enjoy one of the most privileged areas of the world.

The kitchen has been perfectly equipped with top-of-the-line appliances. We also offer you the possibility to design the kitchen according to your own taste, with a wide range of choices and high-quality finishing touches.



Vive, disfruta, descansa

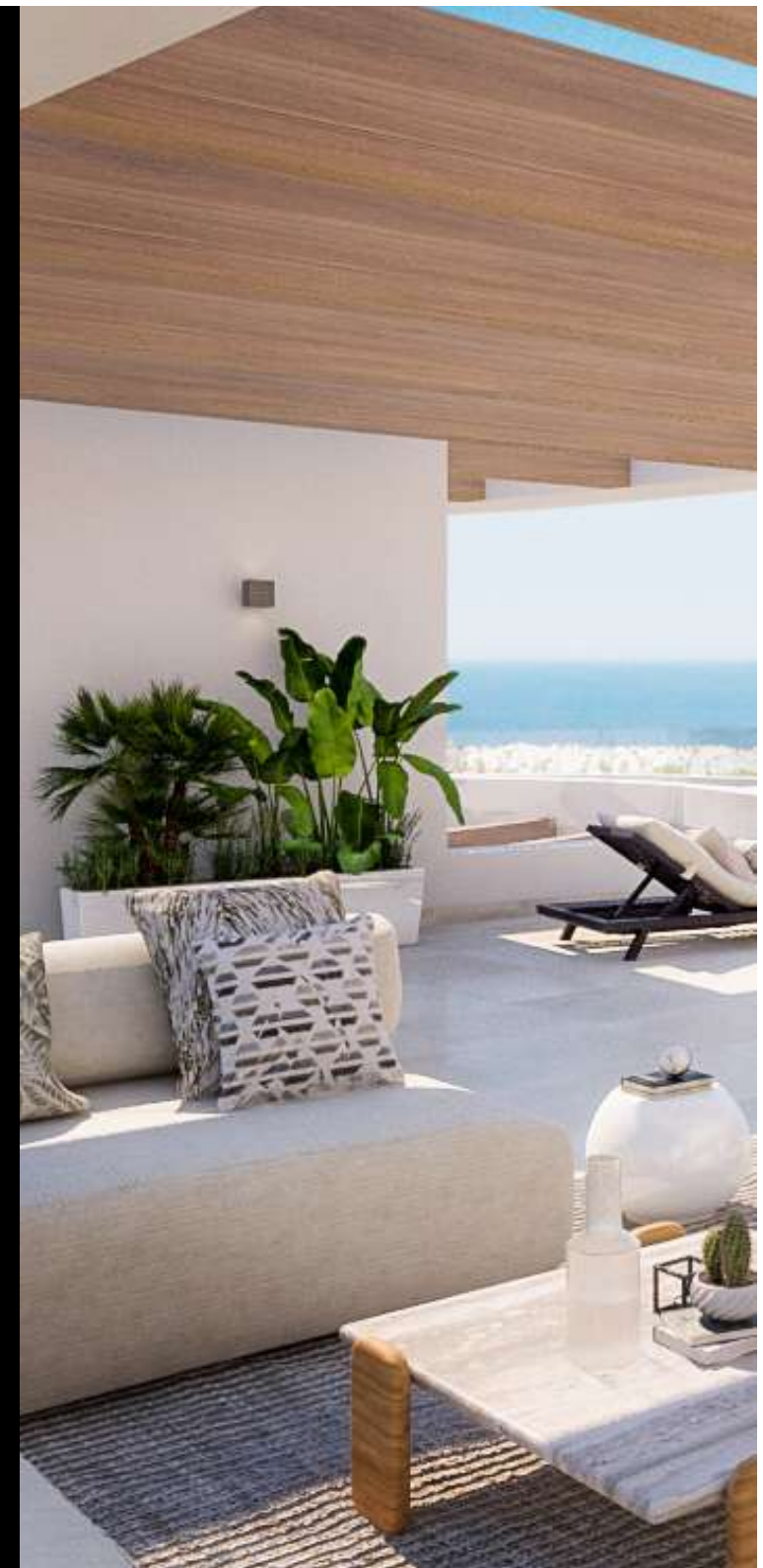
En Breeze Marbella tendrá a su disposición todo lo necesario para vivir cómodamente, descansar en un entorno tranquilo y seguro y disfrutar de momentos especiales con su familia y amigos.

La urbanización contará piscina, zonas ajardinadas, espacio Co-Working y Gimnasio. La urbanización, totalmente cerrada, contará con cámaras de vigilancia permanente y un servicios de concierge.

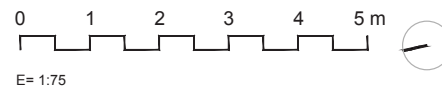
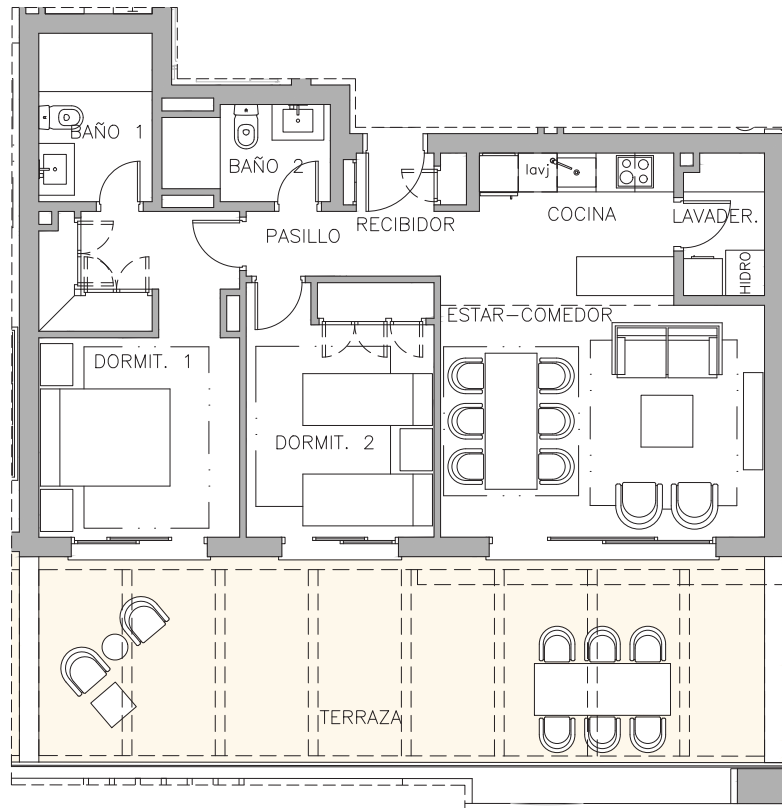
Live, enjoy and rest

In Breeze Marbella you will have at your disposal everything you require for a comfortable living, rest in a peaceful and safe environment and enjoying special moments with your family and friends.

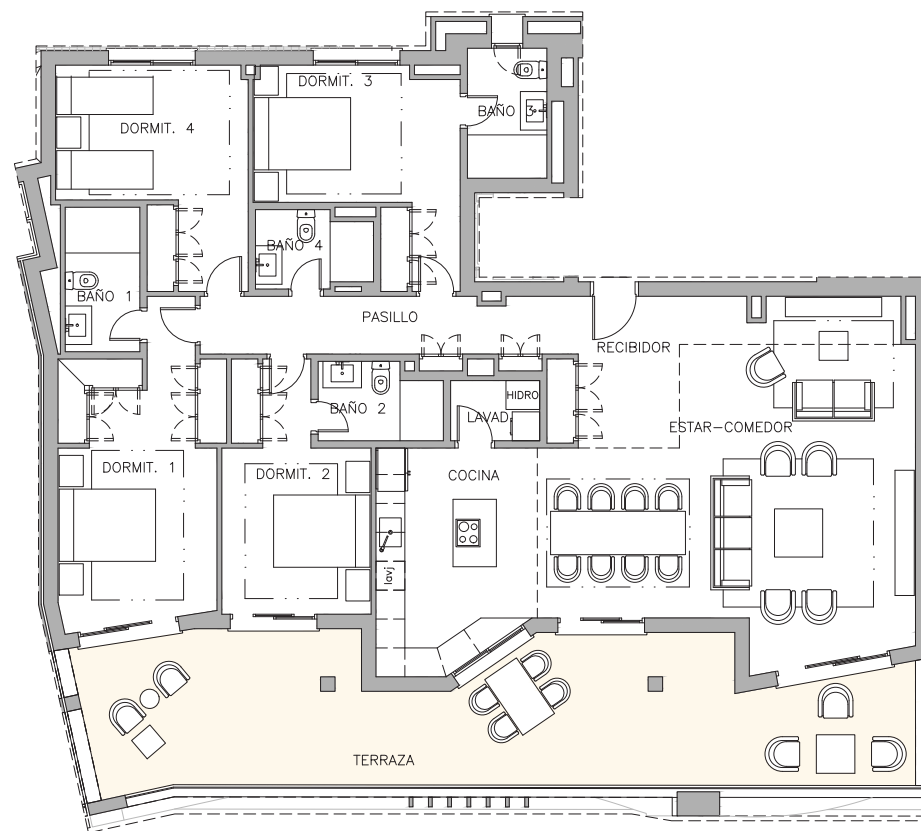
The development will have a swimming pool, landscaped areas, a Co-Working space and fitness area. The urbanization, totally enclosed, will have permanent surveillance cameras and concierge services.



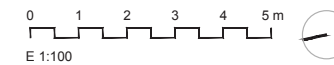


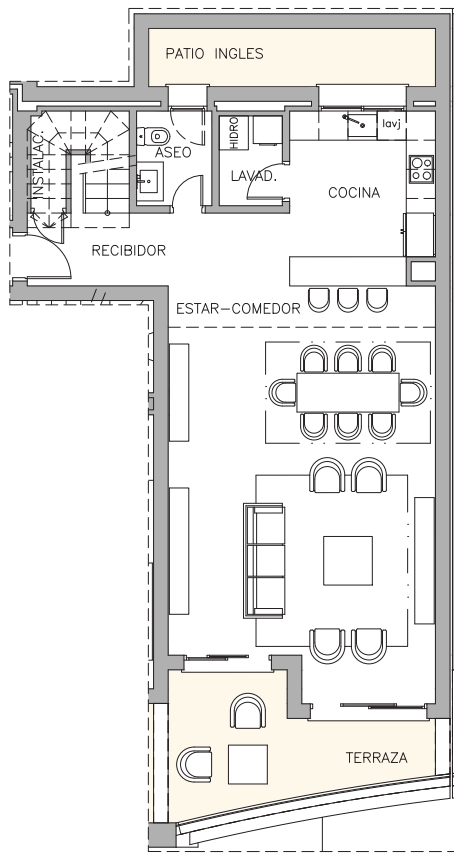


Dos dormitorios
Two bedrooms

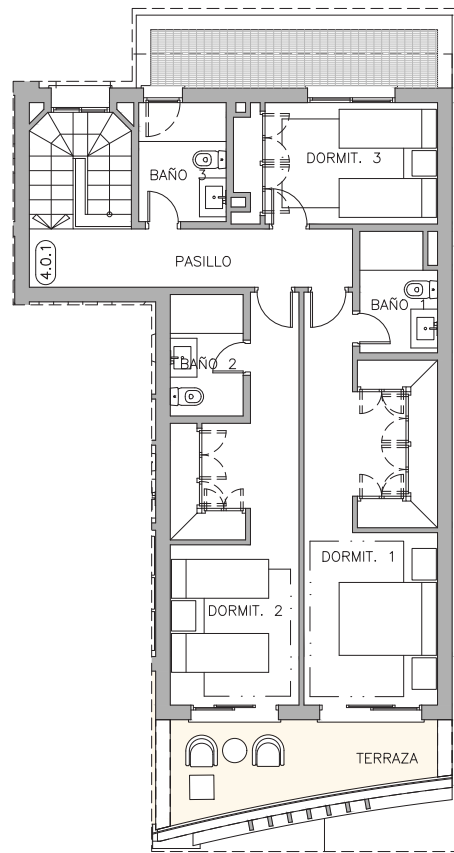


Cuatro dormitorios
Four bedrooms

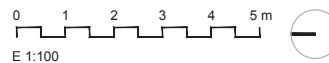




PLANTA 0



PLANTA PRIMERA



Duplex 3D
3D Duplex

LIVE THE
MEDITERRANEAN
STYLE



GALERÍA

GALLERY



El proyecto en imágenes

VISTA FRONTAL
SALÓN
DETALLE VISTA FRONTAL
ÁREA DE PISCINA

24
26
28
30

The project in images

FRONT VIEW
LIVING ROOM
FRONT VIEW DETAIL
POOL AREA







VISTA FRONTAL
FRONT VIEW







SALÓN
LIVING ROOM

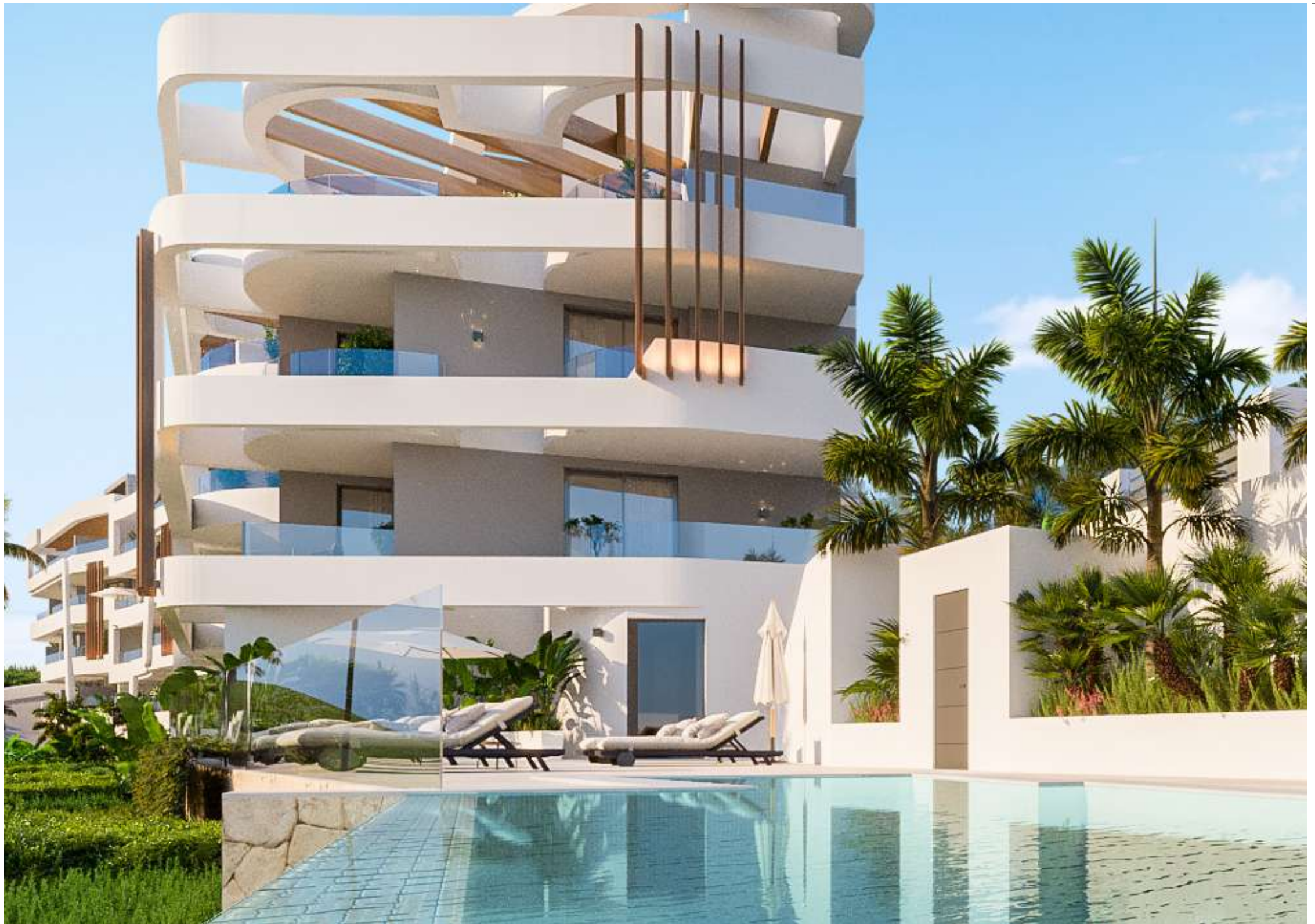






DETALLE VISTA FRONTAL
FRONT VIEW DETAIL







ÁREA DE PISCINA
POOL AREA





A black and white photograph capturing a person's legs from the knees down as they wade through shallow, rippling water. The person is wearing dark, possibly wet, pants. The water is splashing around the legs, creating a sense of movement. In the center of the image, a white rectangular box with a thin border contains the text "WELCOME HOME" in a clean, white, sans-serif font, arranged in two lines. The background shows the horizon line of the water under a pale, overcast sky.

WELCOME
HOME

www.breezemarbella.com