

Venere.
At last!

List of materials.



metrovacesa.
At last!



metrovacesa.
At last!



Quality and comfort

The quality of our selected materials, together with our remarkable designs, produce unique homes.

We work with the best architects and interior designers so that you can have a home that really changes your life.





The images are not real and serve illustration purposes only

Contents

- 1** Foundations and structure
- 2** Facade
- 3** Roofing
- 4** Exterior metalwork
- 5** Interior metal and woodwork
- 6** Walls and insulation
- 7** Flooring and tiling
- 8** Bathrooms
- 9** Bathroom units and taps
- 10** Kitchen
- 11** Suspended ceilings and paintwork
- 12** Electricity, TV and telephone systems
- 13** Heating, air-conditioning and hot water supply
- 14** Ventilation and fan extraction system
- 15** Access and community areas
- 16** Parking
- 17** Energy Classification

1 Foundations and structure

Both the foundations and the structure will be built in reinforced concrete.

2 Facade

The exterior facades of the property will be half-brick walls layered with continuous mortar coating and cavity wall with projected polyurethane foam insulation. The interior of the walls will be insulated drywalls.

The walls between the properties and between the properties and the community areas will be provided with **high-quality sound-absorbing brickwork**, cladded on both sides, drywalls and insulation.

3 Roofing

The technical rooftops will be fitted with the external units of the air-conditioning/aerothermal systems and provided with flat finishes as non-walkable roofs, with thermal insulation and gravel protection.

The terraces and solarium will be layered with anti-slip porcelain stoneware by PORCELANOSA.

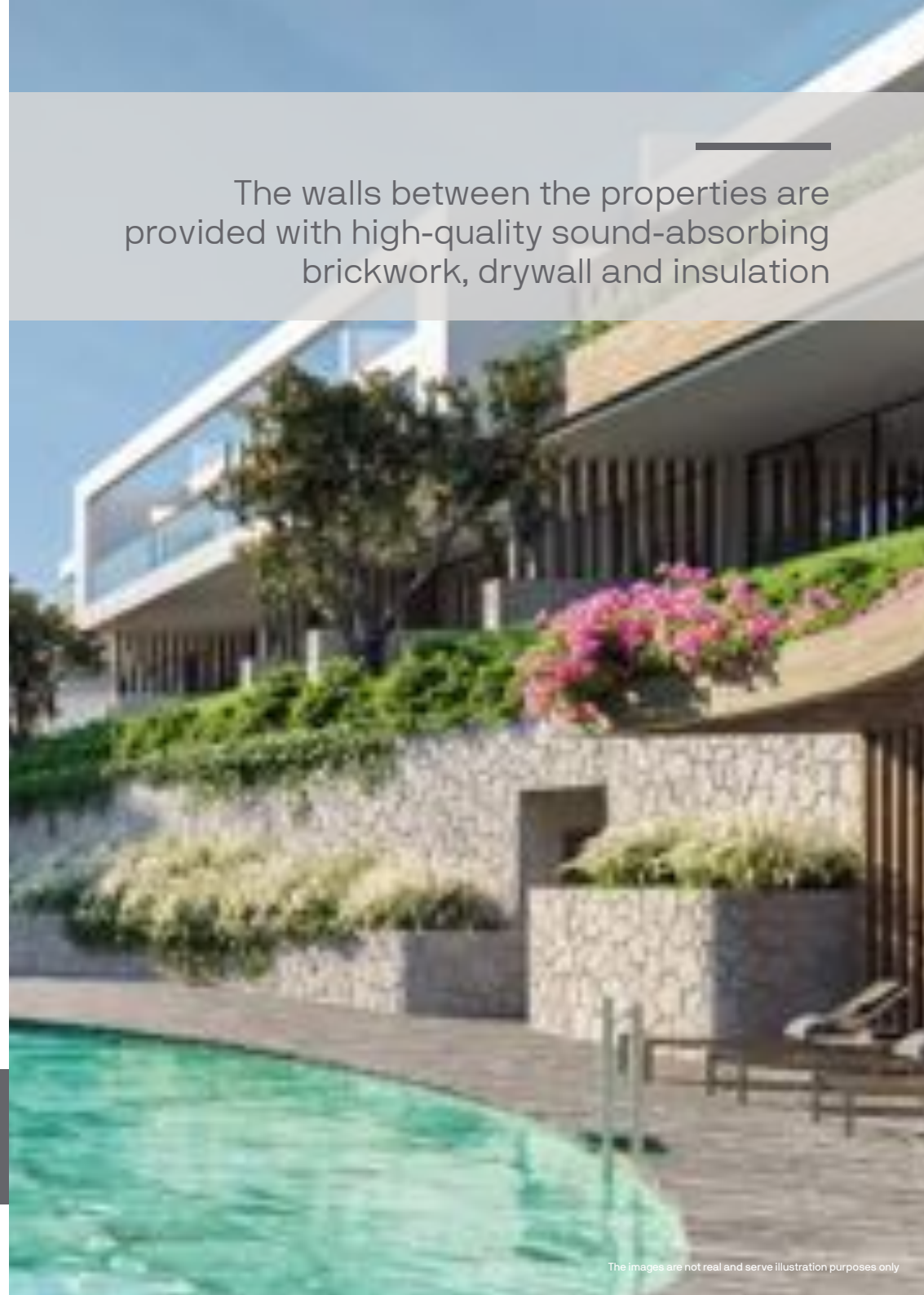
4 Exterior metalwork

All exterior windows and doors (sliding, hinged or tilt and turn, depending on the case) will be finished in aluminium with thermal break and a lacquered finish, thermal and sound-proofed double glazing, automatic aluminium blinds with interior thermal insulation in bedrooms (except in those leading to main terraces) and insulated blind boxes.

Aluminium finishes with thermal and sound-proofed insulated double glazing



The walls between the properties are provided with high-quality sound-absorbing brickwork, drywall and insulation





5 Interior metal and woodwork

Access to the property will be provided through a **security door with security lock**, finished in a lacquered panel in consonance with the other interior metal and woodwork.

The remaining doors will be plain lacquered.

Modular wardrobes with hinged doors in a lacquered finish in consonance with the other metal and woodwork. Wardrobes are provided with side interior lining, with

6 Walls and insulation

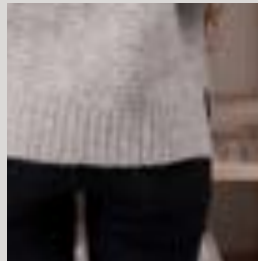
The walls between the properties will be provided with **high-performance sound-absorbing cladded brickwork** on both sides, drywalls and insulation.

The interior walls will be insulated drywalls.

Adequate thermal and sound-proofed comfort

Modular wardrobes with lacquered hinged doors

The images are not real and serve illustration purposes only



The images are not real and serve illustration purposes only



7 Flooring and tiling

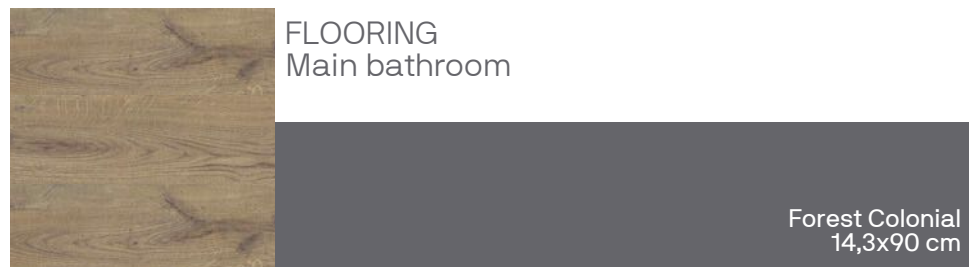
The property flooring will consist of porcelain stoneware by PORCELANOSA with skirting board in the same material

PORCELANOSA Grupo



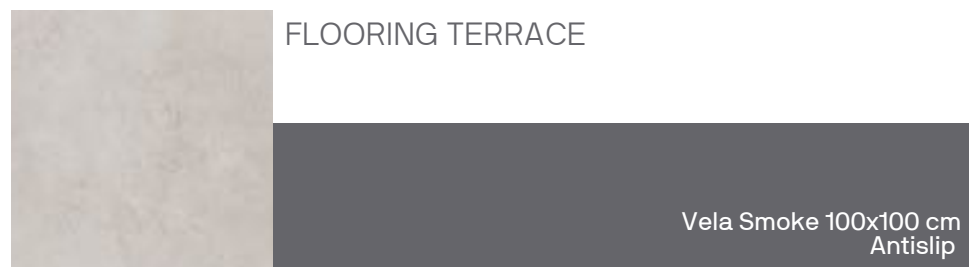
INTERIOR FLOORING
Living-room, bedrooms, kitchen and
second bathroom.

Vela Smoke
100x100 cm



FLOORING
Main bathroom

Forest Colonial
14,3x90 cm



FLOORING TERRACE

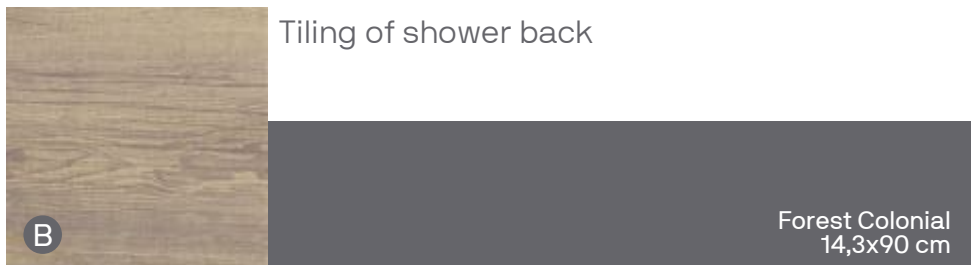
Vela Smoke 100x100 cm
Antislip

8 Main bathroom

All the bathroom walls will be layered in porcelain stoneware by PORCELANOSA from floor to ceiling. Mirror over the unit top basin.

Glass shower screens in all the bathrooms.

PORCELANOSA Grupo



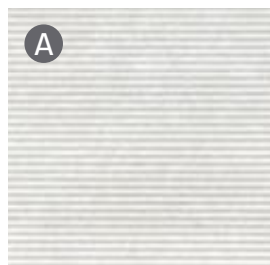
The images are not real and serve illustration purposes only

INCLUDES:
Shower base with customised measure shower deck system under anti-slip Forrest Colonial flooring.
Tina chrome thermostatic mixing valve panel.
Arquitect EU suspended WC.
Yove 1 shower screen.
Kרון Ras 160 cm double-basin unit top. Nk Concept basin taps.

8 Second bathroom

Second bath tiling

PORCELANOSA Grupo



Deco Boston Bone
31,6X90 cm



INCLUDES:
Krion Line shower base.
Tina Chrome thermostatic mixing valve shower panel.
Yove 1 shower screen (in third bathroom, Yove 9 sliding door).
Acro Compact WC.
Krion Kole 100 cm unit top.

Large spaces to make your life more comfortable



9 Bathroom units and taps

Water supply interior ducts are made in reticulated polyurethane.

All the bathrooms and washrooms will be fitted with Porcelanosa bathroom units and taps. Vitrified porcelain WC, hidden shower base in main bathroom and resin shower base in second bathroom. Krion basins and unit tops (Solid Surface).

Thermostatic taps in the showers of the main and second bathrooms. The remaining will be single lever taps.

PORCELANOSA Grupo **KRION**[®]
PORCELANOSA SOLID SURFACE

10 Cocinas

The kitchens are furnished with Krion worktops and fully equipped with appliances.

KRION[®]
PORCELANOSA SOLID SURFACE



INCLUDES:
Krion 1100 Snow White worktops.
Circo Therm Easyclean built-in oven.
Electronic built-in microwave oven.
Induction built-in cooker.
Integrated combi fridge.
Fully integrated dish-washer.
Front-loading washing-machine.

11 Suspended ceilings and paintwork

The suspended ceilings are made of plasterboard in the entire property with manholes in areas where interior air-conditioning units will be placed.

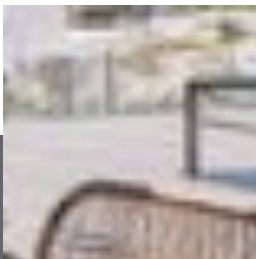
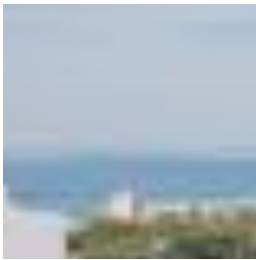
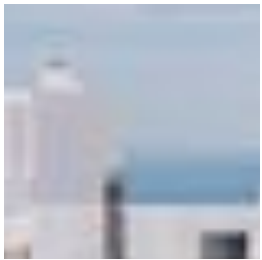
Plain plastic paint will be applied to untiled walls and ceilings.

12 Electricity, TV and telephone systems

Electronic video telecommunication system by Fermax with receiver and colour imaging.

The electrical system will be installed to provide high electrical power, following the Low Tension Electro-Technical Standards. Lighting points. Living-room and bedrooms are provided with TV, telephone and telecommunications connections. All electrical systems will be provided by Gira or a similar brand.

The terrace will be provided with exterior lamp, a water and a TV connection, and water-proofed power sockets.



Gira electrical systems





13 Heating, air-conditioning and hot water supply

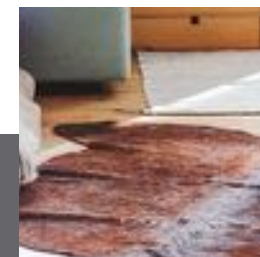
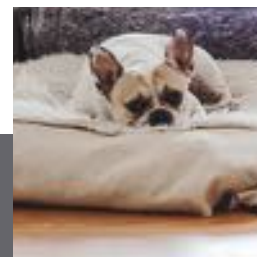
Aerothermal energy system to provide hot water and underfloor heating in the entire property. The interior unit is located in the utility room and the exterior unit on the technical roof.

Full air-conditioning system with heat pump and temperature control by a heating/ cooling zoning control system (AirZone), motorised grilles and fibreglass ducts.

The interior unit is mounted in the secondary bathroom's suspended ceiling and the exterior unit is on the technical roof.

14 Ventilation and fan extraction system

The properties are provided with interior air renovation systems with extractor fans in bathrooms and kitchens.



The images are not real and serve illustration purposes only



15 Access and community areas

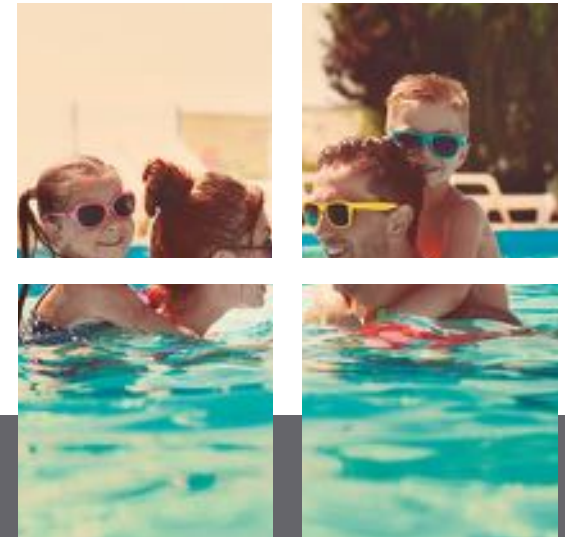
Community swimming-pool

Large garden areas

Spa with panelled sauna and benches, jacuzzis and shower area.

Gym with changing rooms.

The images are not real and serve illustration purposes only



The images are not real and serve illustration purposes only

A development
designed with the
quality of life of its
residents in mind



Vehicle access is provided by an automated door

16 Community parking space

Vehicle access is provided by an automated door.

The flooring will be concrete mechanically smoothed in driving and storage room areas.

The storage rooms will be finished in plastic paint.

The walls in the parking area will be made of concrete.

Non-drinkable water supply outlets are also provided.



Parking space markings and pictograms

The images are not real and serve illustration purposes only



17 Energy classification



Improvement of construction solutions in order to optimise energy consumption and guarantee user comfort and enjoyment.



LED bulbs are used in various areas of the building, thus guaranteeing optimal consumption, durability and efficiency.



Latest technology in air-conditioning and air-quality systems, with prioritisation of the final outcome product as well as low consumption.

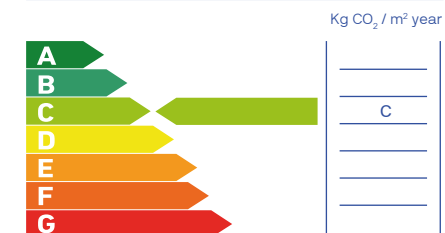


Sanitary units that are environmentally friendly. Their low consumption provides significant savings on the water bill as well as contributing to improve our environment.

Non-renewable primary energy use



Carbon dioxide emissions



Note: This information, drawings, measurements, dimensions and graphic documentation are for guidance only and they are not contractually binding. They may be subject to potential modifications due to technical, legal or administrative requirements deriving from the granting of the necessary permits and authorisations, as well as any construction or design requirements the Construction Managers might need to consider, without detriment to quality. The furniture, garden features and appliances are shown with illustration purposes only and therefore they will not be included in the property, except in the cases where these are specifically included in the list of materials. The wardrobe dimensions refer to the necessary building gaps. The kitchen furniture and the layout of the appliances may vary slightly subject to their final assembly. The flooring and tiling are also shown for illustration purposes only and modifications may apply.

Our quality standards provide excellent outcomes to guarantee the users' comfort and enjoyment of their home, with not alone the best quality materials in the market, but also the lowest energy consumption.



metrovacesa. At last!



Find your new home at metrovacesa.com | 900 55 25 25 | infopromociones@metrovacesa.com

This list of construction materials serves illustration purposes only, and Metrovacesa, S.A. reserves the right to introduce any modifications necessary on account of technical or legal requirements, as per the indications of the head architect, when these are necessary or convenient for the efficient completion of the building or when they are requested by the competent public bodies, in which case they will be replaced by others of equal or higher quality. The images in this brochure are for illustration purposes only and not contractually binding.