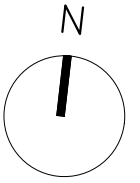
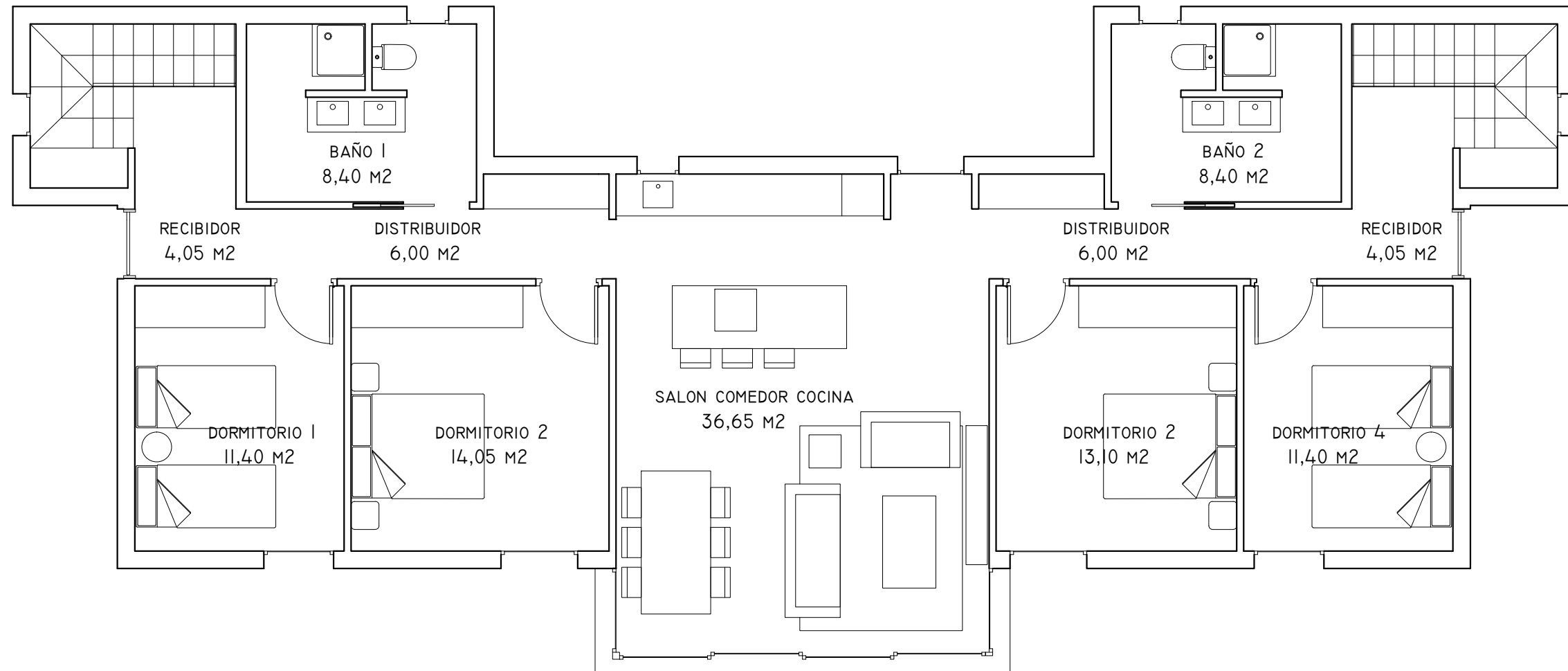


VILLA 2T - C IBIZA (AGUAS NUEVAS) TORREVIEJA



PLANTA BAJA



| | |
|------------------------|-----------------------|
| SUP CONSTR PL. BAJA | 154,60 M ² |
| SUP CONSTR PL. PRIMERA | 86,50 M ² |
| TOTAL SUP CONSTR. | 241,10 M ² |
| SUP SOLARIUM Y BALC. | 69,90 M ² |

TOTAL SUPERFICIE 311,00 M²